



PRODUCT

OnlineDigiFlow

SHORT DESCRIPTION

Digital photography workflow

APPLICATION

Optimization of photo production

BENEFIT

Interactive image selection in real-time

OnlineDigiFlow, the photography portal that is available worldwide, supports studio and on-location photography production, provides maximum process safety and an automated workflow and reduces the overall cost of manufacturing.

OnlineDigiFlow allows you to transfer all digital images during or immediately after the photo shoot to the OnlineDigiFlow portal via the Internet. All team members have direct access to all images. Pre-selection at the location is no longer needed. Image selection takes place comfortably at the graphic artist's desktop even while the photo team is still on location.

A virtual light box and different tools for image viewing simplify the process of image prioritization and the subsequent selection.

Benefits

Your benefits

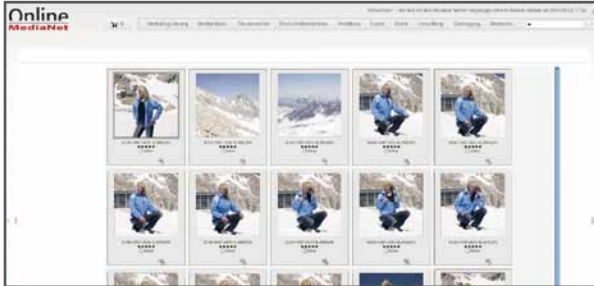
- Optimization and streamlining of your entire production costs
- Flexible and central communication between all participants
- Interactive image selection immediately after the photo shoot – worldwide
- Integrated workflow for clippings and image processing

The most important functions

- Support for RAW, JPEG and TIFF
- Choice to upload fine or coarse data
- Automated, rule-based allocation of the image data
- Comprehensive status management for maximum overview
- Metadata analysis during upload
- System-aided image prioritization
- Stepless magnification of all image for details view
- Workflow for automated further processing

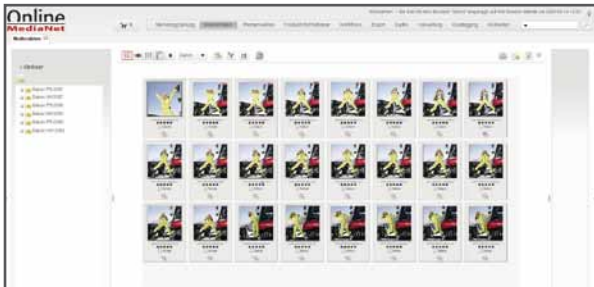
Main functions

1



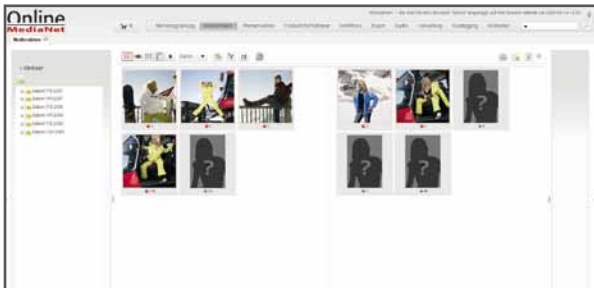
Use OnlineDigiFlow both in the photo studio as well as for outdoor photography. Because OnlineDigiFlow allows you to transfer all digital images during or after the photo shoot to the worldwide available OnlineDigiFlow portal via the Internet.

2



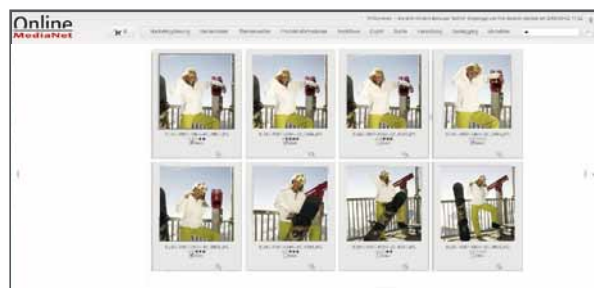
Per drag+drop your data is transferred to the OnlineDigiFlow portal automatically when connected to the Internet. To keep transfer times and costs as low as possible, lossless compression is used on the images.

3

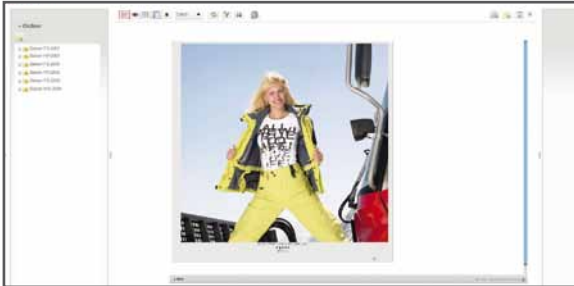


All team members of a production have immediate access to the photograph galleries. Using an integrated rights management, user permissions can be granted down to the image level.

4



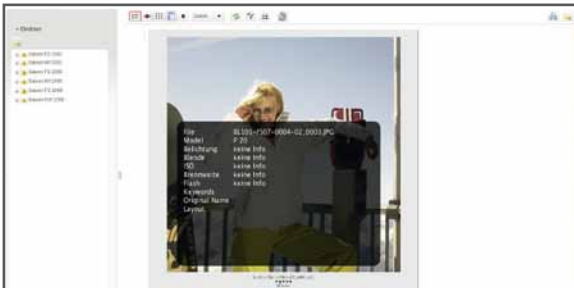
Viewing a photo gallery takes place through an integrated digital light box.

5

For a more precise examination, the image data can be magnified in different views.

6

Different tools are available for image prioritization and selection depending on the defined workflow. These can be controlled entirely with the keyboard.

7

At the click of a button metadata (EXIF, IPTC, XMP) can be displayed to check exposure, aperture, photographer, recording dates, and so on.

8

An integrated workflow takes care of figurative clippings and individual image processing especially for still photography. As a result, the graphic designer can concentrate entirely on the creative process.

SportScheck

Peter Lindecke, Photo Production Manager, SportScheck GmbH and driving force behind the development of OnlineDigiFlow

„OnlineDigiFlow enables location-independent teamwork for catalog production with the different simultaneously working photo teams. This helps us bring a new product range to our customers before the competition. Speed means a lot in the mail-order business, because who comes first gets the business.“

mirabeau

Karin Johannes, Marketing/Sales Manager, Mirabeau Versand GmbH

„Thanks to OnlineDigiFlow we can make a much faster image selection for our catalog production in collaboration with the photographer. On top of that OnlineDigiFlow safeguards an efficient and high-quality workflow between photographer, agency, and our internal departments.“



Sibylle Boberg, Art/Print Manager, K&L Ruppert Stiftung & Co. Handels-KG

„The decisive feature of OnlineDigiFlow is the speed from photography through to the print-ready layout. In this manner we achieve the fastest possible workflow for our supplement and Internet production.“

OnlineDigiFlow is one of our innovative products. Upon request, OnlineDigiFlow can be fully integrated into our unique multi-channel system OnlineMediaNet. The unbeatable benefits of both solutions are combined to achieve maximum efficiency for your marketing.



Meyle+Müller GmbH+Co. KG
Maximilianstraße 104, 75172 Pforzheim
GERMANY
Telephone: +49 (0)7231-941-0
www.meyle-mueller.de

w&co MediaServices München GmbH & Co KG
Fritz-Schäffer-Straße 2, 81737 Munich
GERMANY
Telephone: +49 (0)89-678003-01
www.w-co.de